

**Health, Safety, Environment,
Energy Efficiency**



Biodiversity Management

**CDB Global Platform Meeting on Business & Biodiversity
Tokyo - Japan
15th December 2011**



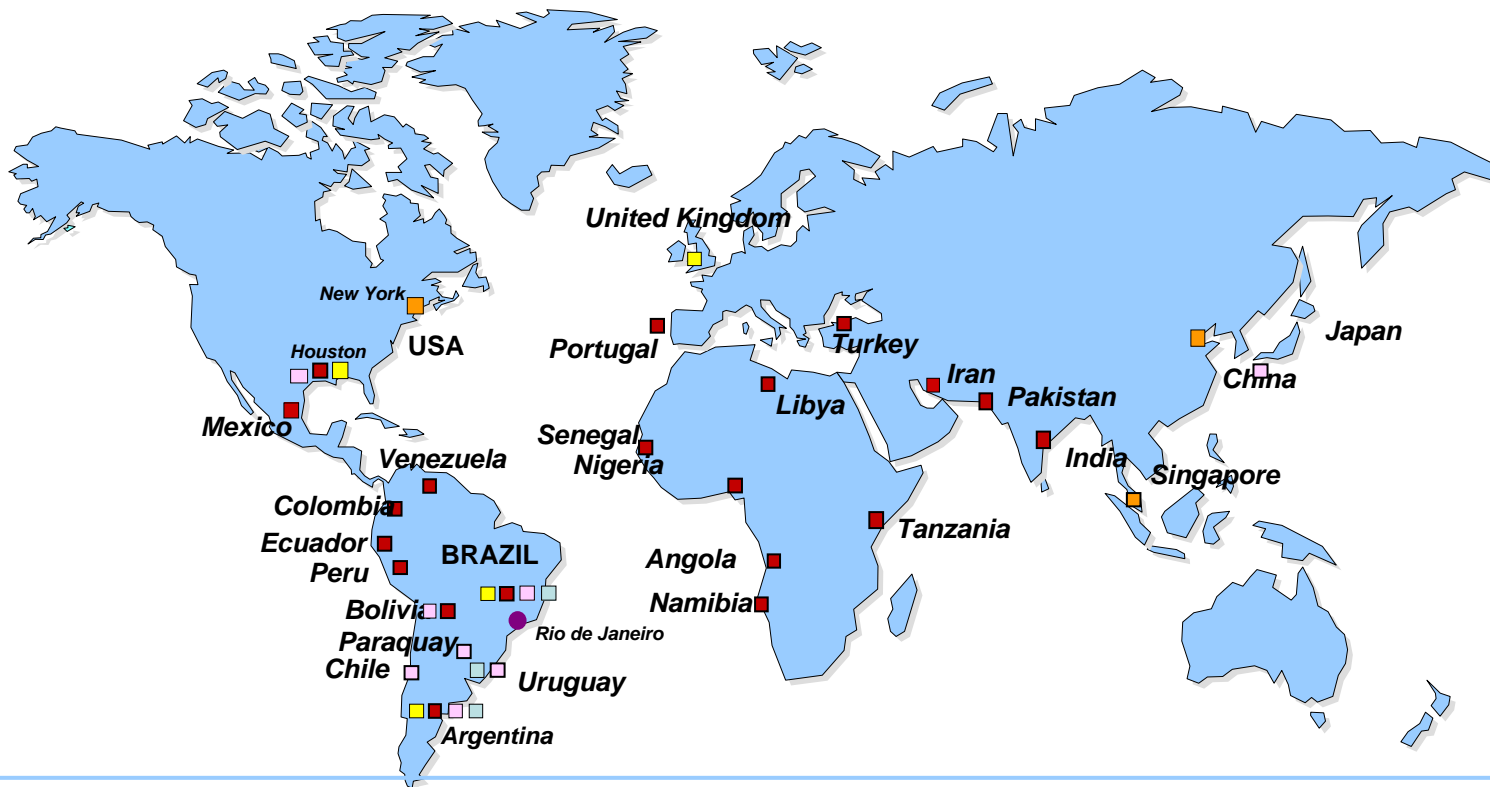
**Ana Paula Ramos
Biodiversity Coordinator
PETROBRAS**



Agenda

- **Petrobras Overview**
- **Biodiversity Management & CDB**

Petrobras Worldwide – 28 countries



● HEADQUARTERS
■ DOWNSTREAM

■ TRADING
■ E&P

■ GAS & POWER
■ OFFICES

Petrobras - 2010

Investments 2011-2015: US\$ 224,7 billion

Refineries: 16
- Yield: 2.2 million bpd

Terminals: 47

Vessel Fleet: 291
- Own: 52

Pipelines: 29.398 km

Service Stations
- 8477

Power Plants: 18

Biofuels Plants: 6

Fertilizers Plants: 2



Proved Reserves: 16 bilhões
BOE (SPE criterion)

Daily Production
(Million bpd): 2.6

Production Platforms:
132
(86 fixed, 46 floating)

Net Revenue:
US\$ 129 billion



PETROBRAS CORPORATE STRATEGY to 2020

Integrated, profitable growth, on a sustainable basis

Commitment to Sustainable Development

Integrated Growth

Profitability

Social and Environmental Responsibility

Expand operations in target markets for oil, oil products, petrochemicals, gas and energy, biofuels and distribution and to be recognized as a benchmark among integrated energy companies

Corporate Strategy

Grow oil and gas production in a sustainable manner, becoming one of the five largest oil producers in the world

Expand refining in Brazil, ensuring sufficiency in domestic supply and leadership in distribution, while developing export markets for products, with emphasis in the Atlantic basin

Consolidate leadership in the Brazilian natural gas market, and establishing an international presence and increasing the domestic electricity generation business and gas chemical, emphasizing fertilizers

Operate in the petrochemical sector in activities that are integrated manner with the other businesses of the Petrobras system

Operate in Brazil and abroad in the biofuels sector in activities that are integrated with the Petrobras system, and to do so on a sustainable basis

Operational excellence, in management, in energy efficiency, in human resources and in technology

Business Segments



E&P



Downstream Distribution
(RTC)



Gas and Energy



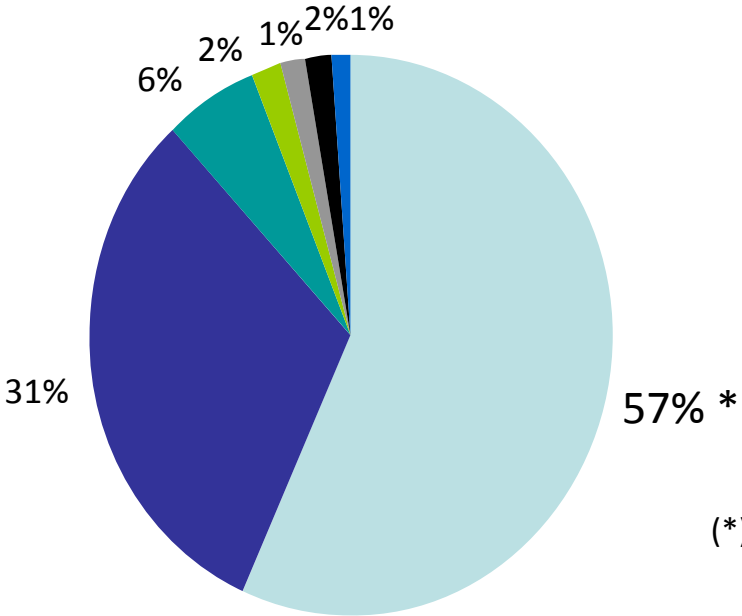
Petrochemicals



Biofuels

2011-15 Business Plan

US\$224.7 billion



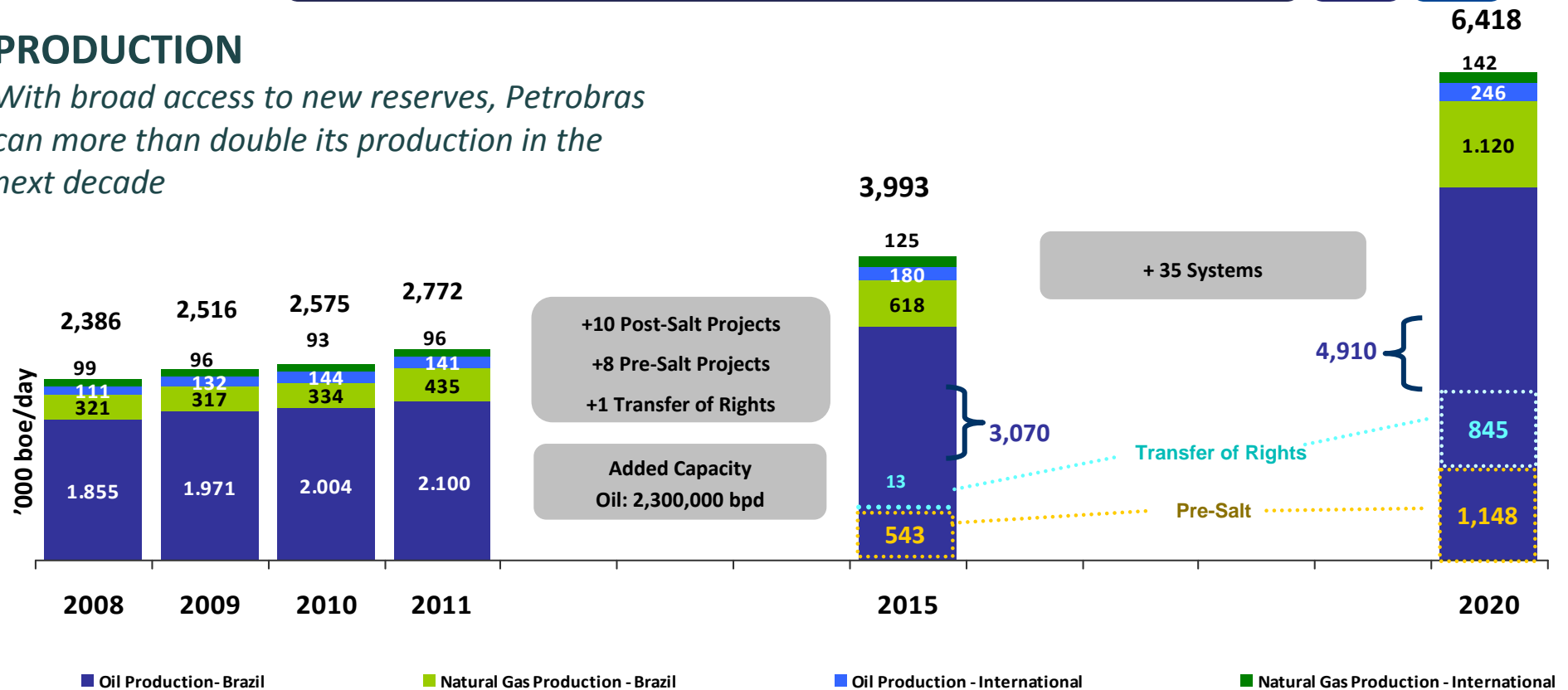
(*) US\$22.8 billion in Exploration

- E&P
- Downstream
- Gas, Energy & Gas Chemicals
- Petrochemicals
- Distribution
- Biofuels
- Corporate

Production

PRODUCTION

With broad access to new reserves, Petrobras can more than double its production in the next decade

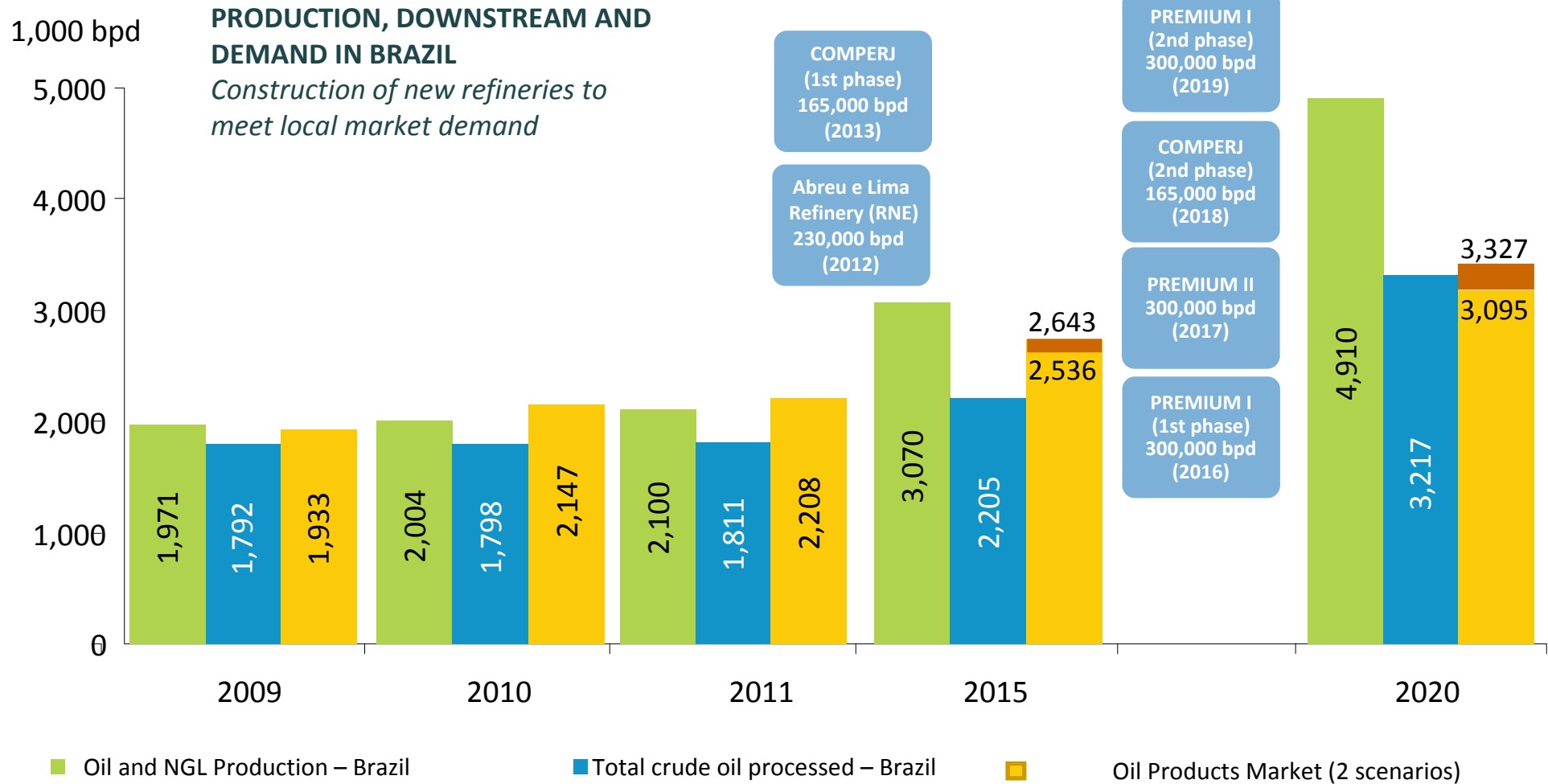


- Pre-salt and Transfer of Rights will represent 69% of the additional capacity up to 2020;
- Pre-Salt participation in the total production will enhance from the current 2% to 18% in 2015 and 40.5% in 2020.



Note: Does not include Non-Consolidated International Production.

Refining

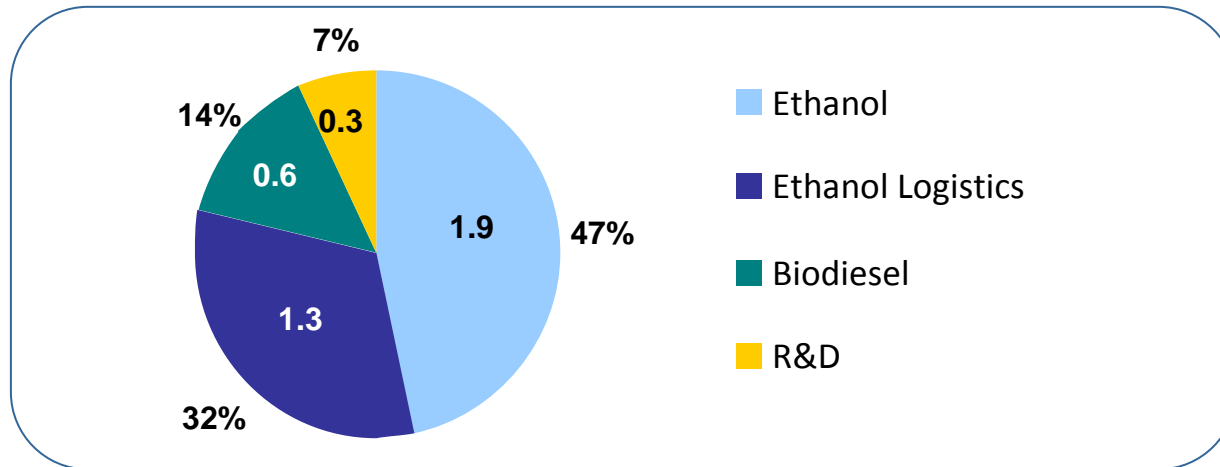


• Highlights: Abreu e Lima, 1st phase of COMPERJ, and 1st phase of Premium I.

Biofuels

2011-2015 INVESTMENTS

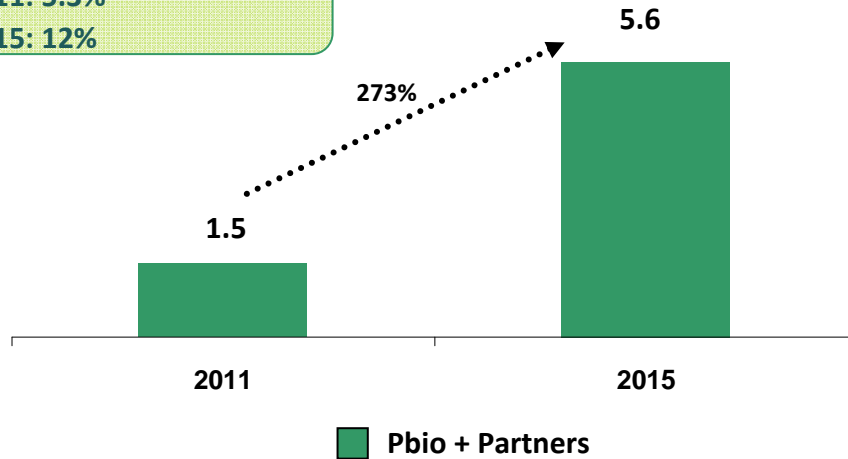
US\$ 4.1 billion



Ethanol supply (million m³)

Market-share Pbio+Partners:

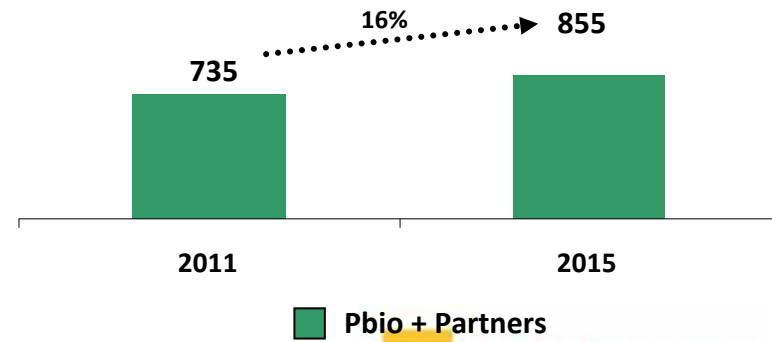
- 2011: 5.3%
- 2015: 12%



Biodiesel supply ('000 m³)

Market Share Pbio+Partners:

- 2011: 28%
- 2015: 26%



**Great variety of activities
mainly in a Megadiverse
country**

Increasing Land Use

**New business & new
frontiers**



5 Strategic Goals with 20 Targets:

- A) Address the underlying causes of biodiversity loss by mainstreaming biodiversity across government and society.
- B) Reduce the direct pressures on biodiversity and promote sustainable use.
- C) Improve the status of biodiversity by safeguarding ecosystems, species and genetic diversity.
- D) Enhance the benefits to all from biodiversity and ecosystem services.
- E) Enhance implementation through participatory planning, knowledge management and capacity-building.

Strategic Goal A. Target 4: By 2020, at the latest, Governments, businesses and stakeholders at all levels have taken steps to achieve or have implemented plans for sustainable production and consumption and have kept the impacts of use of natural resources well within safe ecological limits.

Strategic Goal B. Target 5: By 2020 the rate of loss of all natural habitats, including forests, is at least halved and where feasible brought close to zero, and degradation and fragmentation is significantly reduced.

Strategic Goal C. Target 11: By 2020, at least 17% of terrestrial and inland water areas, and 10% of coastal and marine areas, ..., are conserved through effectively and equitably managed, ...

Strategic Goal D. Target 14 : By 2020, ecosystems that provide essential services, including services related to water, and contribute to health, livelihoods and well-being, are restored and safeguarded, taking into account the needs of women, indigenous and local communities, and the poor and vulnerable.

Strategic Goal E. Target 19: By 2020, knowledge, the science base and technologies relating to biodiversity, its values, functioning, status and trends, and the consequences of its loss, are improved, widely shared and transferred, and applied.

Intergovernmental Platform on Biodiversity and Ecosystem Services (IPBES).

BIODIVERSITY MANAGEMENT

- Environmental characterization and monitoring projects, and Biodiversity research projects through Petrobras R&D Center (CENPES)
- Corporate standardization on Biodiversity
- Corporate data systems
- Biodiversity criteria on the Program for HSE Management Evaluation
- Biodiversity criteria for investment projects
- Participation on National and International Forums

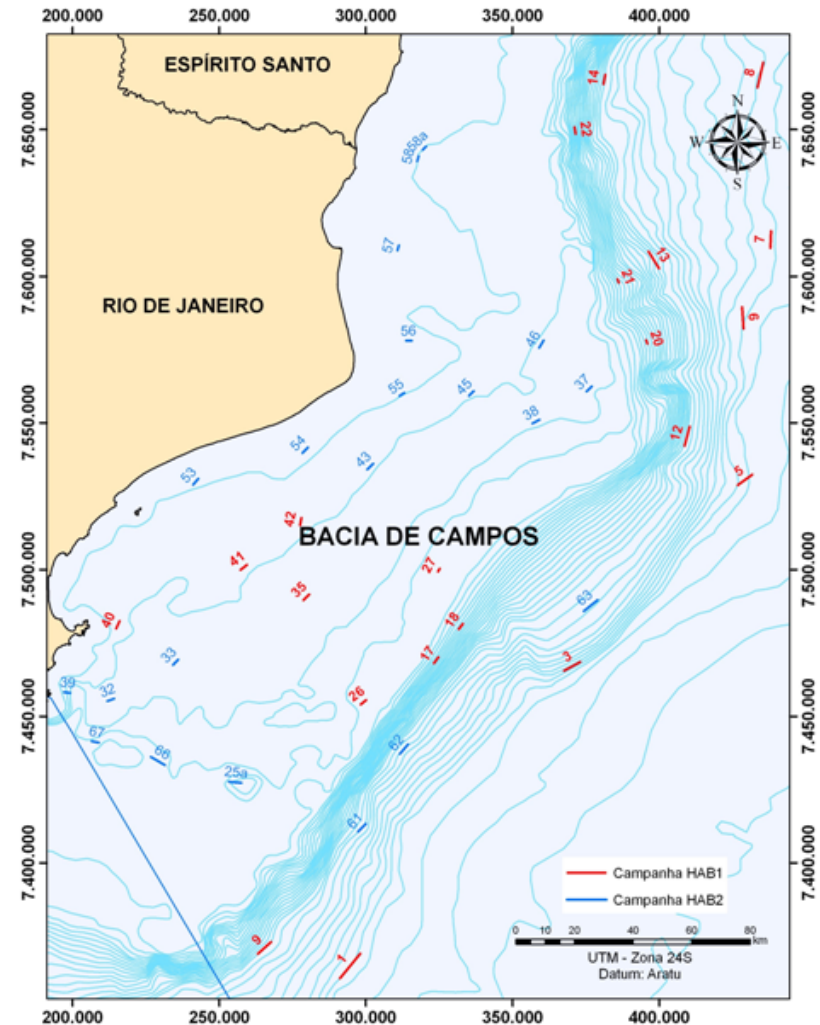
BIODIVERSITY MANAGEMENT

HABITATS Project – Evaluation of the Environmental Heterogeneity of the Campos Basin

2008-2011

Brazilian Research Centers:

UFRJ, UNIRIO, USU, UFES, UFPE, UFRPE, UFCG, UFAL, UNIVALI, FURG, FIOCRUZ, UERJ, PUC-RJ, UENF, USP, UFF, IEAPM, UFPr, INPE e UFSC
Around 180 people involved.



BIODIVERSITY MANAGEMENT

Programa Petrobras Ambiental

Water and Climate from 2008 to 2012

Begun in 2003

Five Brazilian Biomes

3,6 million people

over 820 partnerships

over five thousand native species studies

Marine Biodiversity Projects

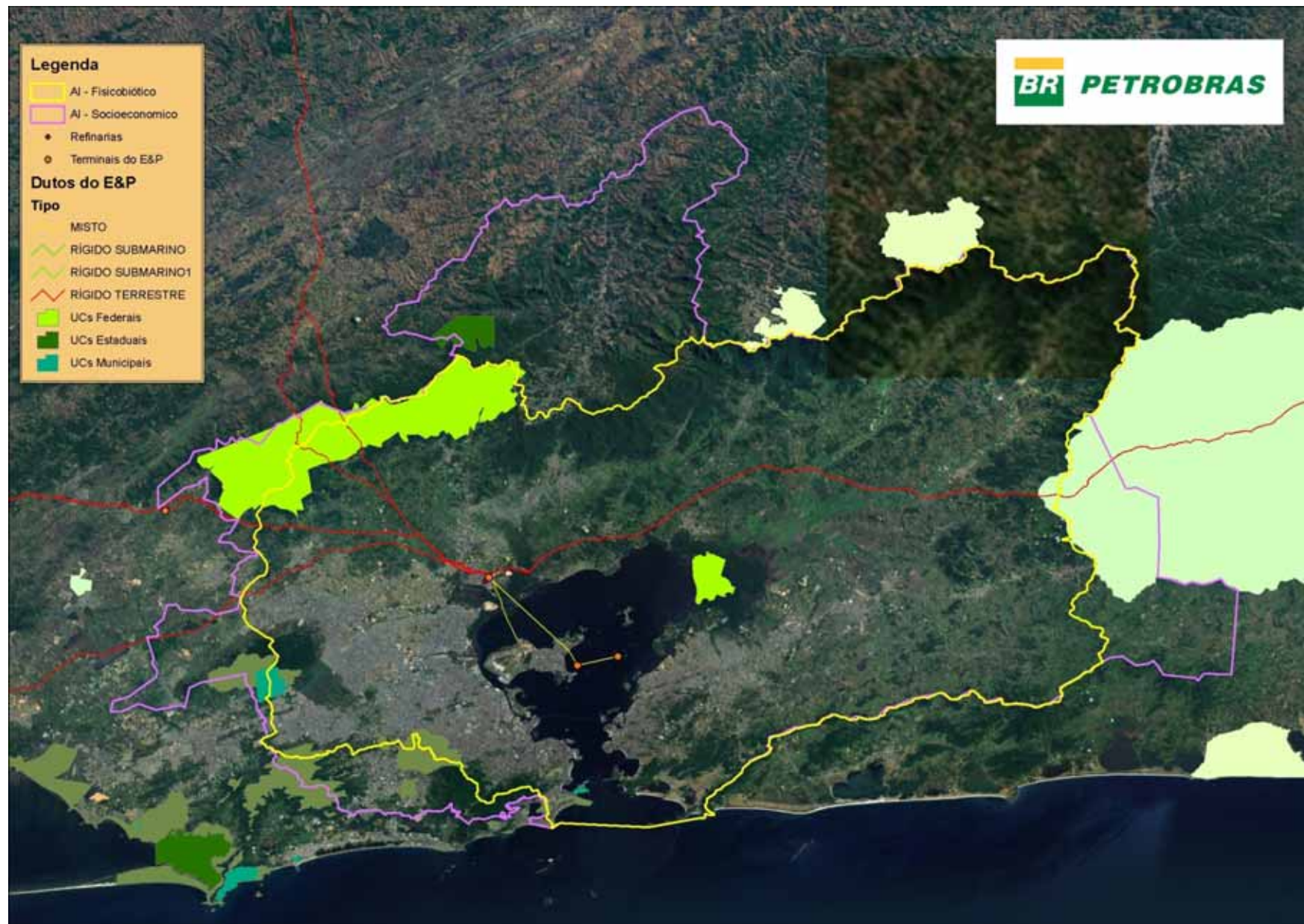


Petrobras HSE Excellence Strategic Program

3 Biodiversity milestones de Biodiversidade da Petrobras

- To map all the protected, sensitive and vulnerable areas within its operational area of influence.
- To implement a systematic for biodiversity impact assessment for its operations.
- To assess and to have a restoration plan for all degraded lands by its operations.

GEOPORTAL – GIS Integrating Platform



- Participation on Biodiversity relevant Forums

National

- Chamber on Biodiversity and Biotechnology of Brazilian BCSD (vice-chair)
- CNI Biodiversity Network
- Technical Comitee of LIFE Institute

International

- IPIECA Biodiversity Working Group
- WBCSD Focus Area on Ecosystems
- RoundTable of Sustainable Biofuels – RSB
- CDB Meetings and COPs

BIODIVERSITY MANAGEMENT

Brazilian Biodiversity and Business Action CEBDS



Life in harmony, into the future

Effective biodiversity and ecosystem policy and regulation
Business input to the COP10 of the Convention on Biological Diversity



The International Business and
Ecosystems Dialogue – WBCSD/IUCN



BIODIVERSITY PARTNERSHIPS

- **UNEP / WCMC Proteus**
- **LIFE Institute**
- **TEEB Business Brazil**
- **Brazilian Ministry of Environment and Funbio to establish marine protected areas**

SOME CBD COP-10 RELEVANT DECISIONS

Business engagement will allow:

Better contribution towards CDBs Goals;

Identification of opportunities related to biodiversity and ecosystem services;

Sharing of best practices and lessons learned;

Commitments such as partnerships, statements, use of certification processes, etc.

Financial Institutions, Stakeholders, Shareholders and Risk Evaluation Agencies

- *Due diligences*
- Financial institutions rules and questionnaires
- Risk ranking agencies
- Sustainability Indexes (DJSI, Water Disclosure Project)

RISKS AND OPPORTUNITIES

- More efficient licensing process;
- New projects – to understand the dependencies and potential impacts on ecosystem services;
- To contribute with the Biodiversity knowledge;
- Contribution to Public Policies.



Thank You!
Ana Paula Ramos
anapaula.ramos@petrobras.com.br